



Apartment 62, Convent Court Hatch Lane, Windsor, SL4 3QR
£295,000

 **HORLER**

Apartment 62, Convent Court Hatch Lane, Windsor, SL4 3QR

A stylish converted home set within the gated Convent Court development, offering bright open-plan living, two generous double bedrooms, and a private balcony. The property also benefits from allocated parking and access to well-maintained communal gardens, making it an excellent choice for both comfortable living and investment.



Property Summary

Set within the gated Convent Court development, this stylishly converted home combines modern living with peaceful surroundings. It features open-plan accommodation and a private balcony, creating a bright, spacious setting ideal for both relaxing and entertaining.

With two generously sized double bedrooms, this home provides ample space for comfortable living. The design ensures that natural light floods through the property, enhancing the warm and welcoming feel throughout.

One of the standout features of this development is the stunning communal gardens that envelop the property. These beautifully maintained gardens offer a tranquil escape, ideal for leisurely strolls or simply enjoying the beauty of nature right at your doorstep.

Additionally, the property comes with allocated parking, providing convenience and peace of mind for residents.

Whether you are looking to make it your own or seeking a sound investment, this property is sure to impress.

General information:

Lease remaining: Approx 104 years remaining

Service charge: Approx. £3666.36 per year

Ground rent: Approx. £250 per year

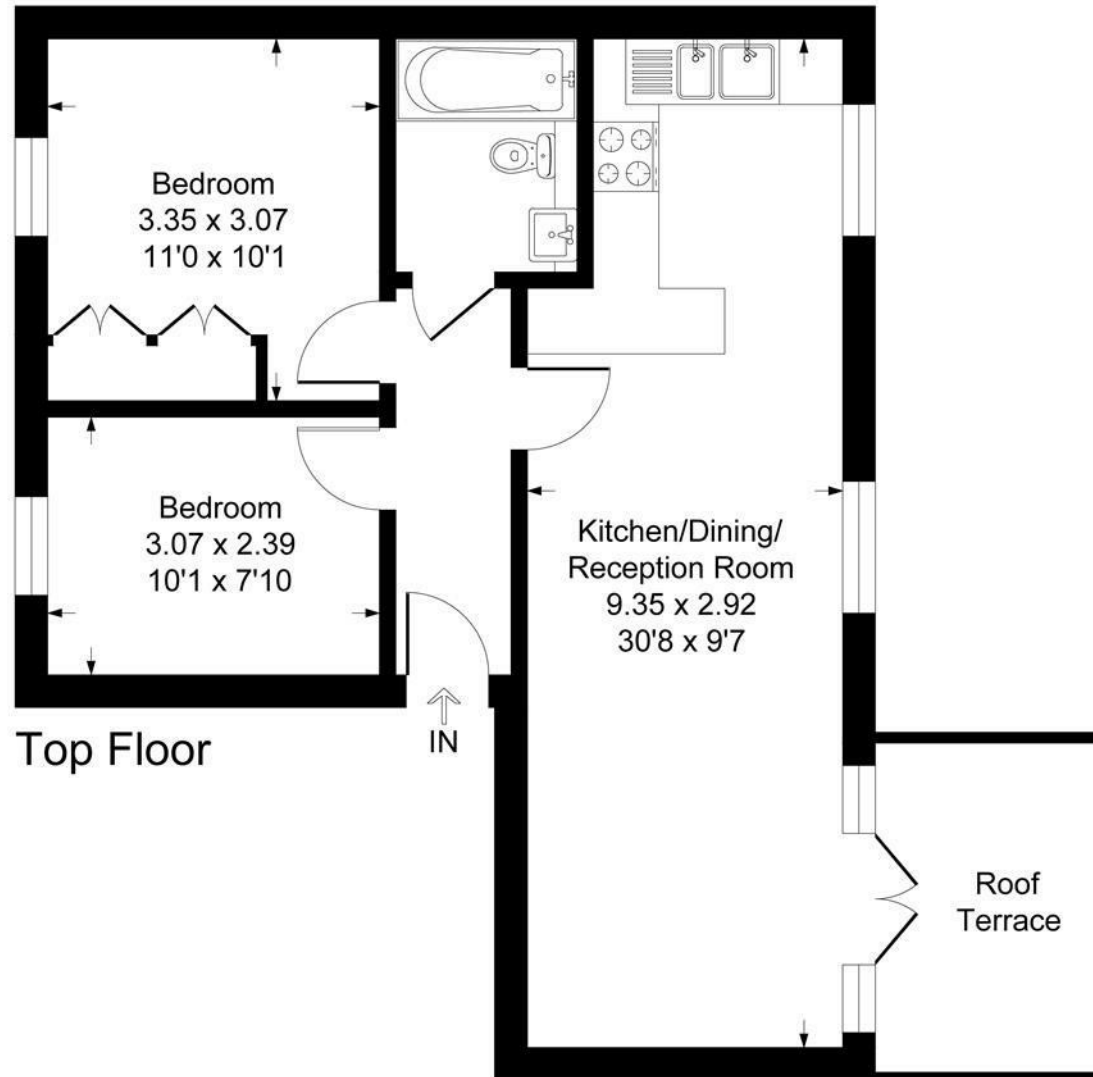
Legal Note

Although these particulars are thought to be materially correct their accuracy cannot be guaranteed and they do not form part of any contract



Convent Court SL4

Approximate Gross Internal Floor Area = 53.5 sq m / 576 sq ft



Top Floor

Illustration for identification purposes only, measurements are approximate, not to scale.
Produced By Esjay Property Marketing